



Moosehead Gold Project (100% owned)

Flagship Project Targeting Fosterville-Type Orogenic Gold

Infrastructure

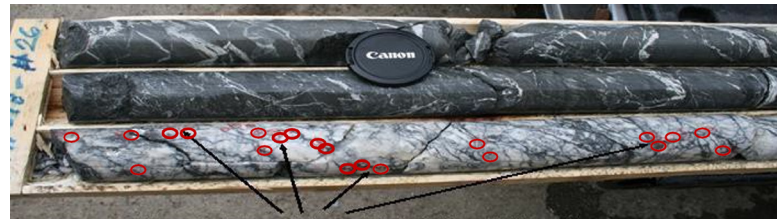
- Year-round road access via Trans-Canada Highway
- One-hour drive to assay lab and drilling companies
- Abundant internal logging and drill roads
- Provincial power sub-station 4 km west of property

Geology/Mineralization

- Situated on the same trend as >5M oz Au Valentine Lake Project (Calibre Mining)
- Structure/geology/mineralization comparable to Fosterville-type gold deposit hosted in antimony-rich quartz veins in folded Paleozoic turbidite sequence adjacent to major crustal scale break
- Visible gold has been intersected in drilling over a 2-km strike-length
- Drilling by Sokoman since 2018 has defined 7 zones in 500+ drill intercepts representing a total of **101,519 m** of diamond drilling



Eastern Trend: New High-Grade Gold Discovery
MH-18-01 11.90 m @ 44.96 g/t Au incl. 1.35 m @ 385.85 g/t Au



Mineralized Quartz Vein:
Red circles indicate visible gold

Moosehead Top 25 Holes

Drill Hole	Target Zone	From (m)	To (m)	Length (m)	Au (g/t)	Gram Metres
MH-18-39	Eastern Trend	75.45	84.5	9.05	70.29	636.12
MH-18-01	Eastern Trend	109	120.9	11.9	44.96	535.02
MH-22-463	Eastern Trend	295.3	334.9	39.6	12.5	495.15
MH-21-342	Eastern Trend	67.8	73.35	5.55	56.58	314.03
MH-21-141	South Pond	47.9	52.1	4.2	64	268.80
MH-01-23	Western Trend	14.18	15.71	1.53	170.31	260.57
MH-21-163	Footwall Splay	36.7	55.6	18.9	13.09	247.35
MH-18-08	Western Trend	8.5	9.55	1.05	207.51	217.89
MH-20-115	Footwall Splay	64	68.6	4.6	47.2	217.12
MH-22-505	Eastern Trend	188.9	210.25	21.35	9.75	208.22
MH-22-366	75 Zone	34.95	36.35	1.4	133.94	187.52
MH-18-17	Eastern Trend	79.8	82.1	2.3	79.23	182.23
MH-21-276	Eastern Trend	42	44.2	2.2	75.82	166.81
MH-19-62	Eastern Trend	237.45	244.65	7.2	22.35	160.92
MH-20-123	South Pond	47	52	5	26.87	134.37
MH-19-81	Eastern Trend	262.8	269.2	6.4	17.34	110.98
MH-21-164	Footwall Splay	79.95	100.9	20.95	5.15	108.00
MH-20-132	Footwall Splay	70.5	74.5	4	24.92	99.67
MH-21-346	Eastern Trend	117.65	122.4	4.75	20.75	98.55
MH-22-359	75 Zone	19.44	20.44	1	95.03	95.03
MH-20-86	Eastern Trend	271.3	276.5	5.2	16.85	87.60
MH-21-234	75 Zone	44.75	49.55	4.8	17.56	84.29
MH-21-166	Footwall Splay	9	14.1	5.1	15.51	79.10
MH-21-191	Eastern Trend	244.05	247.65	3.6	21.86	78.70
MH-19-68	Eastern Trend	83.6	95.4	11.8	6.61	78.00

Fleur de Lys Gold Project (100% owned)

*District-Scale Project Targeting Dalradian-Style
Orogenic Gold Deposit*

Fleur de Lys Project Highlights

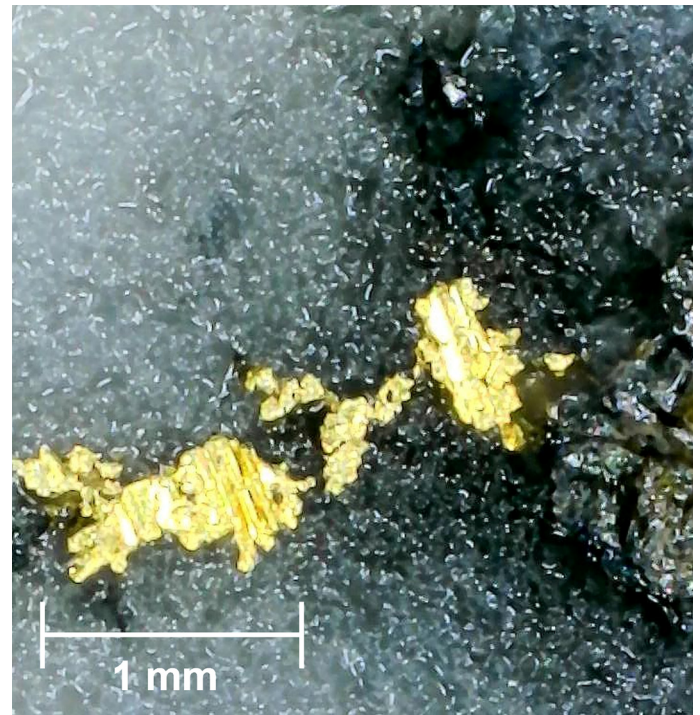
- A total of 1,315 claims (328.75 km²)
- Adjacent to all of Newfoundland's current gold production
- Geological equivalent to the Dalradian belt in the Northern UK Caledonides (Curraghinalt - 6 million ounces)
- 2019/22 Sokoman tills returned up to 200 gold grains with more than 47% pristine
- Till anomaly extends over 30 km
- Intensive prospecting results in new discovery (Golden Bull – up to 9.02 g/t Au) – drilling in Q3 2024



Share Structure

(as of March 28, 2024)

Shares Issued & Outstanding	287M
Warrants Ranging from \$0.10 - \$0.36	40M
Stock Options Ranging from \$0.22 - \$0.46	8M
Fully Diluted	335M
Market Cap	\$15.7M
52 Week High/Low	\$0.225/0.05
Eric Sprott	21.1%



Golden Bull Discovery



SOKOMAN
MINERALS CORP.



BENTON
RESOURCES INC.



Grey River Gold Project 50/50 JV with Benton Resources Inc.

The project is host to widespread, and locally high-grade, gold mineralization.

JV Grey River

- 324 claims (8,100 hectares) showing great resemblance to the high-grade Pogo gold mine within the Tintina Gold Belt of Alaska and Yukon
- **GR-21-01** intersected three distinct gold zones including a high-grade interval of **10.58 g/t Au over 1.80 m including 50.13 g/t Au over 0.35 m**
- 5 recon holes completed in 2021 all intersected significant gold mineralization over 5-km strike-length
- The 14-holes (3,350 m) in 2022 Phase 2 drilling returned multiple intersections of gold mineralization covering **6.9 km of strike length with the mineralization remaining open in all directions**



(L to R) Tim Froude, President & CEO of Sokoman Minerals Corp., Steve Stares, President & CEO of Benton Resources Inc.



Follow us on social media!



[@SokomanMinerals](https://twitter.com/SokomanMinerals)



[@SokomanMinerals](https://www.facebook.com/SokomanMinerals)



[@Sokoman Minerals Corp.](https://www.linkedin.com/company/Sokoman%20Minerals%20Corp.)

Golden Hope Lithium Project – 50/50 JV with Benton Resources

October 2023 announcement of Partnership with U.S.-based Piedmont Lithium Inc. to advance the Golden Hope Project

JV Golden Hope (Killick Lithium Project) – Kraken Pegmatite Field

- Killick Dyke Best Holes:
 - GH-22-27 intersected 15.23 m @ 1.04% Li₂O including 4.18 m @ 1.48% Li₂O
 - GH-23-46 intersected 16.70 m @ 1.06% Li₂O
- Piedmont's (PLL) combined ownership interest in Killick will be ~70% and will have paid CAD\$2M into Vinland (Spin Co) and CAD\$12M in exploration expenses
- Sokoman and Benton will each retain ~15% interest, CAD\$5M of PLL shares and 1% NSR
- Multiple soil and rock sample Li anomalies remain untested over 20-km strike-length
- Cesium-rich Hydra Dyke located 12 km Northeast of Killick Dyke also carries lithium, tantalum and rubidium



PIEDMONT
LITHIUM



**Hydra Dyke: 0.40 m @ 13.57% Cs₂O, 0.316% Li₂O, 0.012% Ta₂O₅
and 0.38% Rb₂O**



Killick Dyke: GH-22-26

Sokoman Minerals Corp.
Timothy Froude, P.Geo.,
President & CEO
T: 709.765.1726
E: tim@sokomanmineralscorp.com

CHF Capital Markets
Cathy Hume
CEO
T: 416.868.1079 x 251
E: cathy@chfir.com